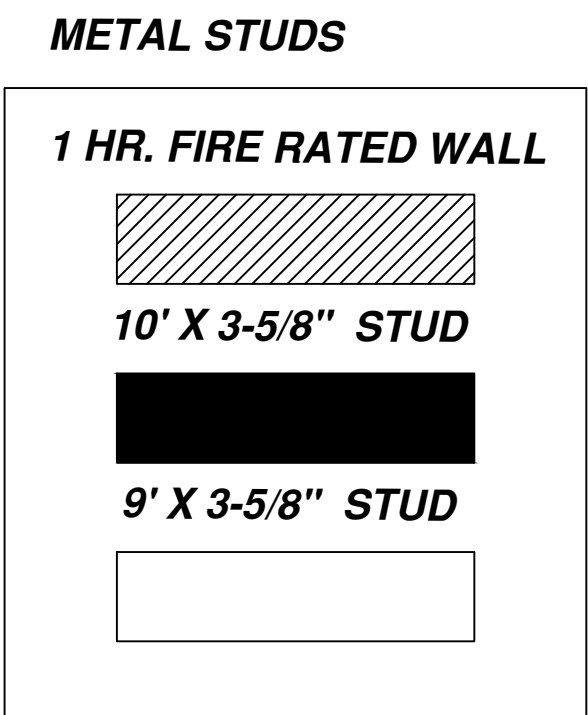
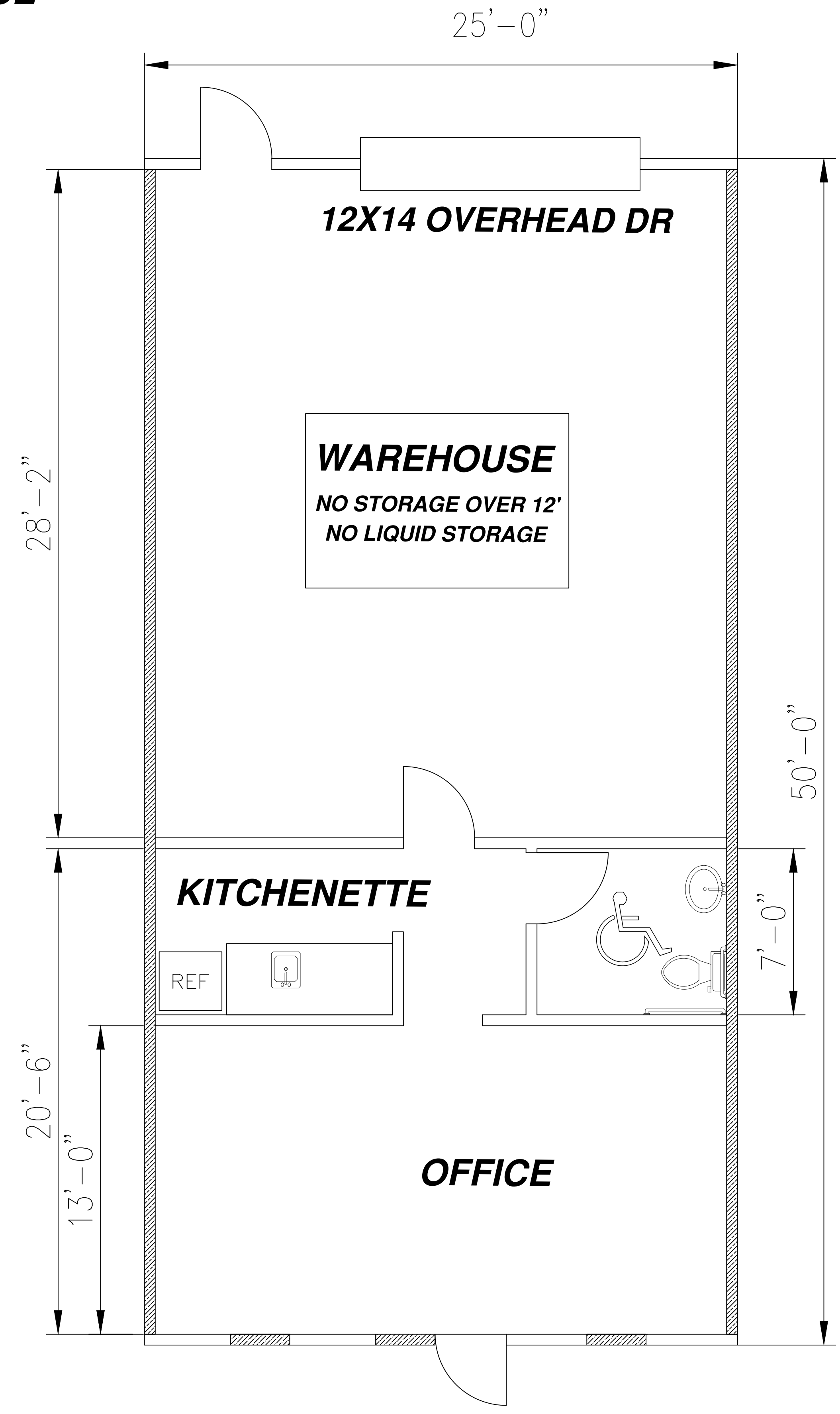


**1,250 SQFT LEASE SPACE  
500 SQFT A/C OFFICE**



**DETAILS**

- A/C OFFICE AREA:**
- 9' CEILING HEIGHT
  - 9' RACO SOLID DOORS
  - LED LIGHTING
  - KITCHENETTE
  - HANDICAP BATHROOM
  - HOT WATER HEATER
- WAREHOUSE AREA:**
- 16' EAVE & CLEAR HEIGHT
  - WATER HOSE BIB
  - PLUMBED FOR MOP SINK
  - LED LIGHTING
  - 120V OUTLETS ON ONE SIDEWALL
- ELECTRICAL SERVICE:**
- 200AMP 120/208 VOLT 3-PHASE WYE



REVISION BLOCK	BY:	10/10/24



**OFFICE BUILDOUT**  
1 250 SQ FT W/ 500 SQ FT OFFICE

ANGLETON 288 BUSINESS PARK  
1 850-1 890 W. HENDERSON RD.  
ANGLETON, TEXAS 77515